



Regupol®

# TECHNICAL DATA SHEET

## REGUPOL® E48 (E-FC-6)

### HIGH PERFORMANCE SCREED ISOLATION FOR BEAM & BLOCK FLOORS

#### PRODUCT DESCRIPTION

Regupol® E48 is a recycled tyre crumb product designed to isolate screeds from the main structure of the building, reducing impact energy generated by general footfall.

Regupol® E48 offers enhanced acoustic performance at loads up to and including 30kN/m and having a dimpled surface on one side increases air movement, further aiding overall performance.

#### APPLICATIONS

Regupol® E48 has been developed to offer enhanced isolation and impact sound performance in:

- Apartments
- Hospitals
- Hotels
- Retail
- Schools

#### BENEFITS

- Robust Detail approval for beam & block floor **E-FC-6**
- Excellent impact and airborne performance
- Offers long term performance without collapse or “bottoming” out under high point loads
- Resistant to ageing and deformation
- Quick and easy to install with no need for separate perimeter strips
- Minimises construction heights
- Mildew and moisture proof
- Zero global warming potential (GWP) and zero ozone depletion potential (ODP)
- Product manufactured using Recycled Materials and 100% recyclable



#### PHYSICAL INFORMATION

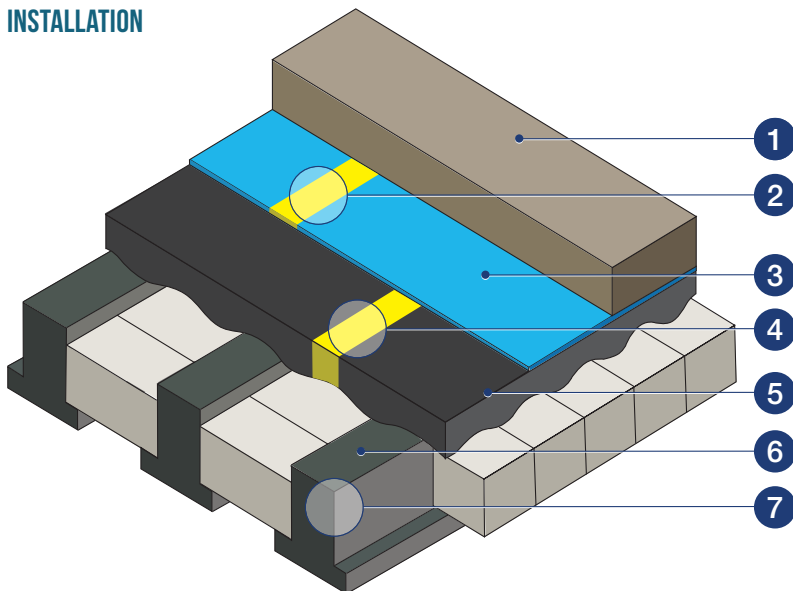
Sheet length	13m
Sheet width	1.15m
Material thickness	8mm nominal (dimpled one side)

#### TECHNICAL INFORMATION

Density	approx 600kg/m <sup>3</sup>
Tensile strength (DIN 53571)	approx 0.5N/mm <sup>2</sup>
Thermal conductivity	approx 0.14W/mK
Elongation at break	approx 47%
Mean Value of Dynamic Stiffness	47MN/m <sup>3</sup>
Maximum load bearing capacity	3000kg/m <sup>2</sup> (30kN/m <sup>2</sup> )
Temperature resistance	-40°C to +110°C
Airborne sound insulation (DnT,w + Ctr)	49dB (mean average)
Impact sound insulation (L'nT,w (Ci))	*47dB (mean average)
Impact Improvement (ΔLw (Cld))	31dB

\* Based upon site testing for Robust Detail compliance in beam and block applications

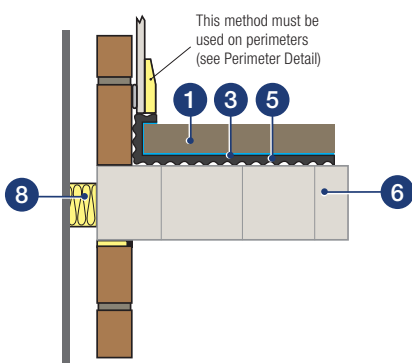
## INSTALLATION



- 1 65mm sand cement screed or minimum 40mm proprietary screed
  - 2 Taped joint\*
  - 3 Minimum 500 gauge polythene sheeting
  - 4 Joint detail\*\*
  - 5 Regupol® E48 8mm layer
  - 6 Beam & Block floor, minimum 300kg/m<sup>2</sup>
  - 7 Perimeter detail
  - 8 Acoustic cavity closer
  - 9 Hi-tack tape
- \* DPM overlap to be minimum 100mm  
\*\* For Proprietary Screens

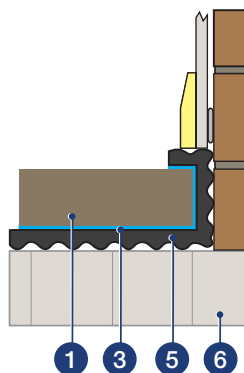
For example purposes only

### Ceiling View



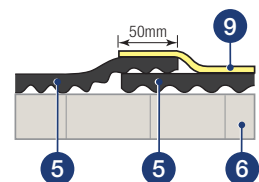
For example purposes only

### 7 Perimeter Detail



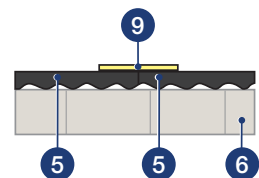
For example purposes only

### 4 Joint Detail - overlapped (Preferred method of installation)



For example purposes only

### 4 Alternative Joint Detail - butted



For example purposes only

## INSTALLATION SERVICE

In addition to supply of this product CMS Danskin Acoustics can provide a listing of competitively-priced approved installers that service anywhere in the UK. Use of this service ensures that installation is performed to the highest standards by tradesmen fully experienced in the specialist skills of fitting CMS Danskin Acoustics materials correctly. Please contact your local CMS Danskin Acoustics.

## IMPORTANT NOTES:

Regupol® E48 must be installed dimple side down.

## CMS DANSKIN ACOUSTICS

**Scotland Office:** Tel: 01698 356000 Fax: 01698 372222  
1 Netherton Road, Wishaw, ML2 0EQ

**Central/Southern Office:** Tel: 01925 577711 Fax: 01925 577733  
Unit 2 Lyncastle Road, Appleton, Warrington, WA4 4SN

Email: [info@cmsdanskin.co.uk](mailto:info@cmsdanskin.co.uk) Website: [www.cmsdanskin.co.uk](http://www.cmsdanskin.co.uk)

**IMPORTANT:** Directions for use are given for guidance only and are not intended to form part of any contract. They should be varied or adapted to suit your particular materials or conditions of use. Goods supplied by the company are made to approved standards from the highest quality raw materials but no warranty or guarantee is given as to their suitability for any particular purpose or application, and no liability is accepted for any loss or damage arising directly or indirectly from the use of the Company's products irrespective of any information given to us as to intended use of such products. It is therefore recommended that prospective users should test a sample of this product under their own conditions to satisfy themselves that the product is suitable for the purpose intended.

**CMSDANSKIN**  
ACOUSTICS